

Summary

The following summarizes all cases from 2006 through 2011 for which toxicological testing was positive for Methylenedioxymethamphetamine (MDMA, also known as Ecstasy), and for which the investigating coroner determined the MDMA was relevant to the death. All classifications of death are included (accidental, homicide, natural, suicide, undetermined).

Statistics

MDMA-related deaths *, 2006 – 2011							
Relevant to Death	2006	2007	2008	2009	2010	2011	Total
Yes	7	12	23	21	18	4	85
Under Investigation	-	-	-	-	2*	12*	14*
Total	7	12	23	21	20	16	99

*Relevance of MDMA detected by toxicological testing is yet to be determined for cases which are under investigation.

MDMA-related deaths by means of death, 2006 – 2011 (completed investigations only)							
Role of MDMA in Death	2006	2007	2008	2009	2010**	2011**	Total
MDMA overdose	2	1	3	4	3	-	13
Mixed drug overdose	1	6	8	12	10	4	41
Contributory							
MVI	3	2	7	3	1	-	16
Fall	-	2	3	-	3	-	8
Natural disease	-	1	1	-	1	-	3
Drowning	-	-	1	1	-	-	2
Other	1	-	-	1	-	-	2
Total	7	12	23	21	18	4	85

** Data not available for cases under investigation.

Note: The BCCS operates in a live database environment. The data are considered preliminary until all investigations have been completed. Data are subject to change, and are not directly comparable to published counts from previous years.

Region

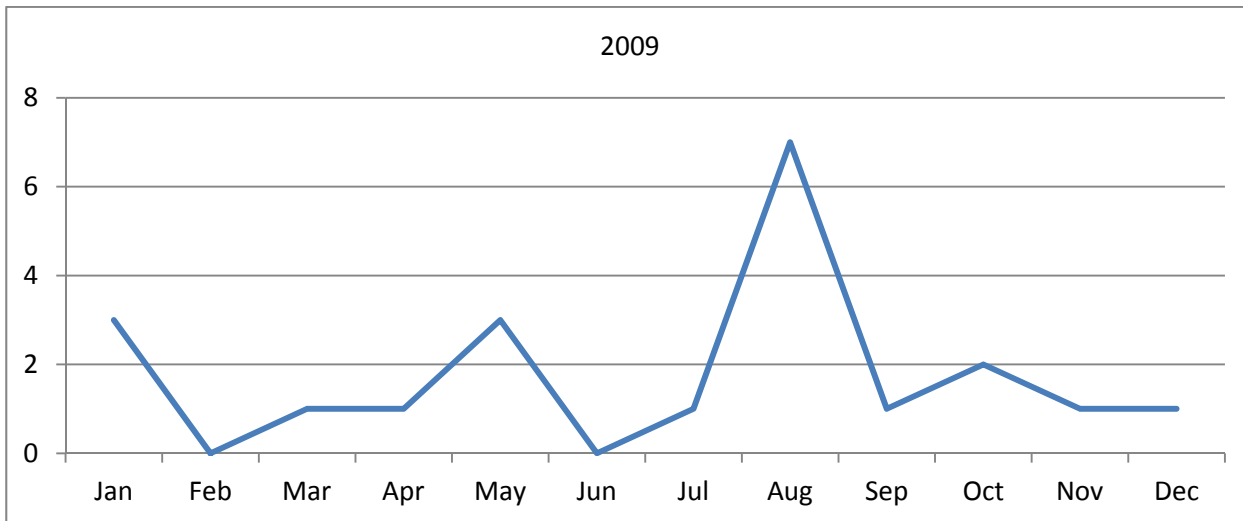
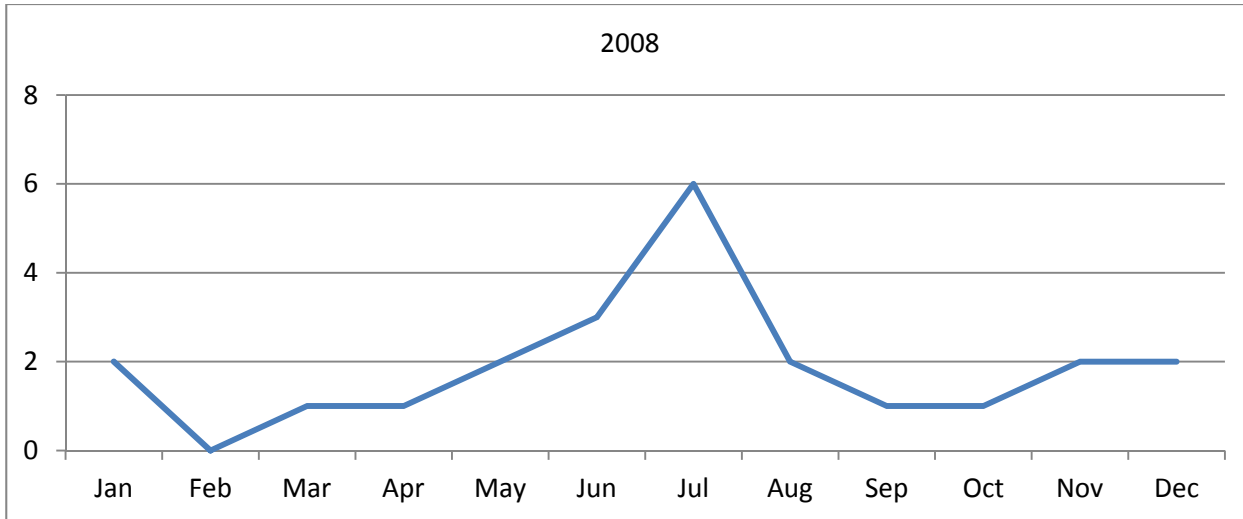
MDMA-related deaths by region of death, 2006 – 2011							
Region	2006	2007	2008	2009	2010*	2011*	Total
Fraser	5	4	7	2	6	2	26
Interior	-	3	1	5	5	3	17
Island	1	2	1	5	4	2	15
Metro	-	3	11	6	3	8	31
Northern	1	-	3	3	2	1	10
Total	7	12	23	21	20	16	99

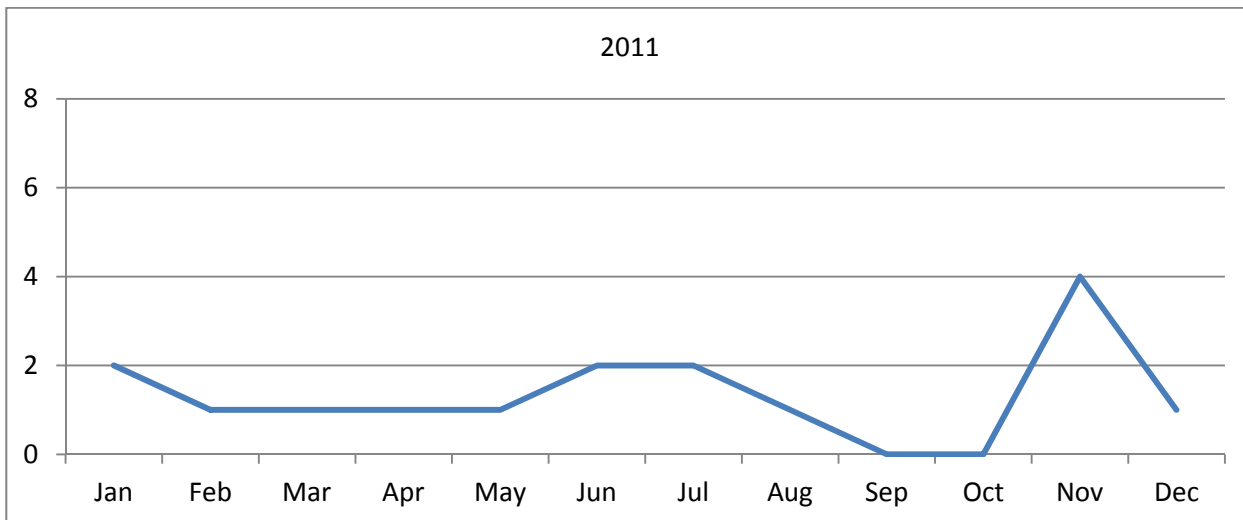
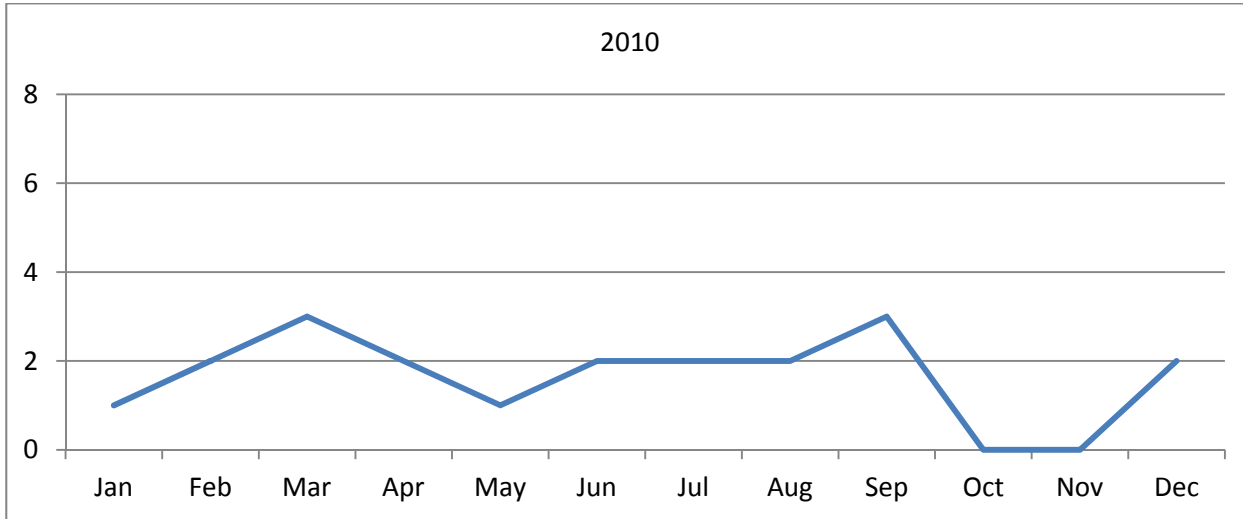
Demographics

MDMA-related deaths by age group, 2006 – 2011							
Age Group	2006	2007	2008	2009	2010*	2011*	Total
≤ 19	4	1	5	5	1	2	18
20-29	2	8	7	10	10	5	42
30-39	-	3	7	3	4	4	21
40-49	1	-	4	3	3	3	14
50-59	-	-	-	-	2	1	3
60-69	-	-	-	-	-	1	1
Total	7	12	23	21	20	16	99

MDMA-related deaths by gender and age group, 2006 – 2011								
Gender and Age Group		2006	2007	2008	2009	2010*	2011*	Total
Female	≤ 19	1	-	3	2	-	-	6
	20-29	-	3	5	1	1	1	11
	30-39	-	1	1	-	-	-	2
	40-49	-	-	-	-	-	1	1
	Subtotal	1	4	9	3	1	2	20
Male	≤ 19	3	1	2	3	1	2	12
	20-29	2	5	2	9	9	4	31
	30-39	-	2	6	3	4	4	19
	40-49	1	-	4	3	3	2	13
	50-59	-	-	-	-	2	1	3
	60-69	-	-	-	-	-	1	1
	Subtotal	6	8	14	18	19	14	79
Total	7	12	23	21	20	16	99	

Month





Township

MDMA-related deaths by township of injury, 2006 – 2011							
Township	2006	2007	2008	2009	2010*	2011*	Total
Abbotsford	-	-	1	-	-	-	1
Arras	-	-	-	-	1	-	1
Burnaby	1	-	1	-	1	-	3
Campbell River	-	-	-	-	1	1	2
Chase	-	-	-	2	-	-	2
Chetwynd	1	-	-	-	-	-	1
Chilliwack	1	1	-	-	-	-	2
Coquitlam	-	-	-	1	-	-	1
Courtenay	-	-	-	2	-	-	2
Cumberland	-	-	-	-	-	1	1
Dawson Creek	-	-	-	-	-	1	1
Duncan	-	-	1	-	-	-	1
Farmington	-	-	-	1	-	-	1
Gray Creek	-	1	-	-	-	-	1
Kamloops	-	-	-	2	2	-	4
Kelowna	-	1	-	-	1	-	2
Langley	1	-	1	-	-	2	4
Maple Ridge	-	1	1	-	-	-	2
Mill Bay	-	-	-	1	-	-	1
Mission	-	2	2	-	1	-	5
New Westminster	-	-	-	-	-	1	1
Peachland	-	-	-	-	-	1	1
Pemberton	-	-	2	-	-	-	2
Port Coquitlam	-	-	1	-	-	-	1
Prince George	-	-	1	2	-	-	3
Qualicum Beach	-	-	-	1	-	-	1
Revelstoke	-	-	-	-	-	1	1
Richmond	-	1	-	-	-	2	3
Seymour Arm	-	-	-	-	1	-	1
Shawnigan Lake	-	-	-	-	1	-	1
Sicamous	-	-	1	-	-	-	1
Surrey	2	-	-	1	5	-	8
Telkwa	-	-	1	-	-	-	1
Terrace	-	-	1	-	-	-	1
Vancouver	-	2	8	5	2	5	22



BC Coroners Service
MDMA (Ecstasy) Related Deaths
2006-2011

Vernon	-	1	-	1	1	1	4
Victoria	1	2	-	1	2	-	6
Whistler	-	-	1	1	-	-	2
Williams Lake	-	-	-	-	1	-	1
Total	7	12	23	21	20	16	99

Note: The BCCS operates in a live database environment. The data are considered preliminary until all investigations have been completed. Data are subject to change, and are not directly comparable to published counts from previous years.